



OVENindustries

ELECTRONIC CONTROL SOLUTIONS

5C7-582 THERMOELECTRIC CONTROLLER

Bi-directional, H-Bridge control provides for both heating and cooling with seamless transition. User friendly PC software allows for configuration in any combination of PID, On-Off, differential temp. or manual output control.

The 5C7-582 controller can be used to take the input from a single sensor and control multiple sets of TE modules through the client controllers (5C7-583). Based on the temperature reading, the 5C7-582 will send out the same power level and current direction to all of the clients. By setting up the thermal system this way, much more power is available to control your thermoelectric modules. Each client is a full pulse width modulated H-bridge with 28VDC/25A of available power.



FEATURES

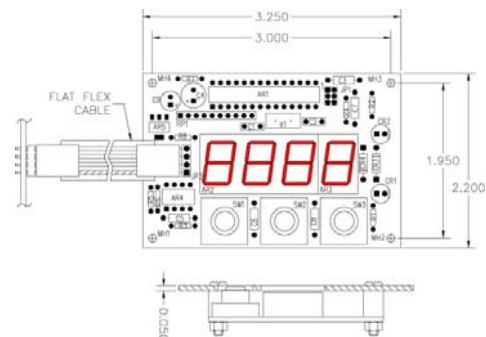
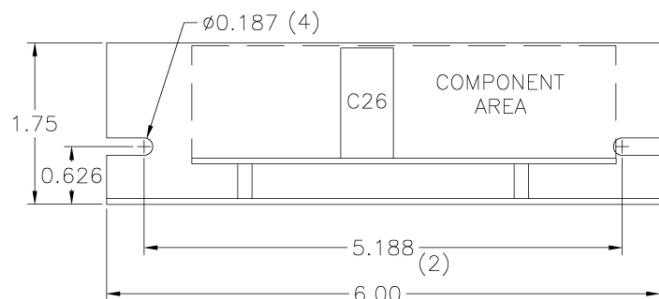
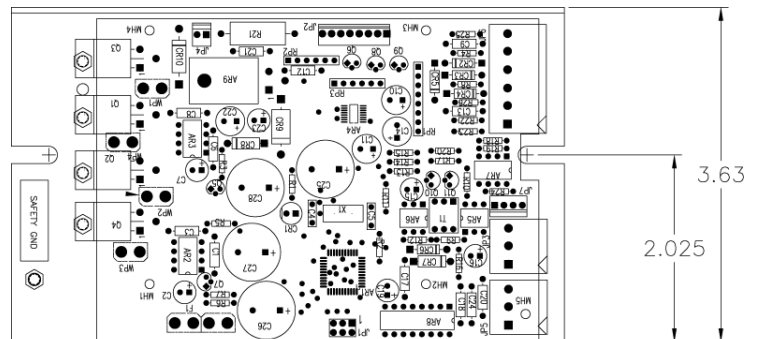
- Full H-Bridge Control
- PC Programmable
- PID or On/Off Control Function
- PC Configurable Alarm Circuit
- RS232 and (2) RS485 Communication Ports
- Set Temperature range of -40 to 200°C

SPECIFICATIONS

- Input Voltage: 9 to 36 VDC
- Load Current: 0.1 to 28 A
- Temperature Resolution: 0.01°C
- PID Functions:
 - Bandwidth: 1 to 20°C
 - Integral: 0 to 5 repeats per minute
 - Derivative: 0 to 5
- PWM base frequency: 2.7 KHz
- Ambient Temperature Range: of 0 to 70°C
- Power Dissipation: 18 W
- Output Power Resolution: 0.19%
- 1.75" H x 6" W x 3.63" D
- Customer Drawing: CDR-00019

ACCESSORIES

- 5C7-584 Four Digit Display for temp. set and display
- 5C7-583 Client 700 W per controller (up 32 per server)
- Sensor Selection:
 - TS67 15K -20 to 100°C
 - TS104 50K 0 to 150°C.



CONTACT US AT **877-766-OVEN** FOR DETAILED DRAWINGS AND PRICING OR VISIT **WWW.OVENIND.COM**